



City of Hastings

2011 Infrastructure Improvements Program
Proposed Improvement Project Areas #3 & #4

2011 Infrastructure Improvements

Preliminary Design Information

Areas 3 & 4

11th Street East

Street Improvements

<u>Segment</u>	<u>Existing Width</u>	<u>Proposed Width</u>
Sibley St to Ramsey St	± 30'	28'
Ramsey St to Tyler St	± 24'	28'

- New concrete curb & gutter along both segments
- Complete reconstruct of street with new base material along both segments.
- Replacement of concrete sidewalk from Sibley St to Ramsey St
- No new sidewalk segments are proposed.

Utility Improvements

- Complete replacement of water main from Sibley St to Ramsey St
- Installation of new water main from Ramsey St to Tyler St
- Water services to be replaced up to and including curb stop valves along both segments.
- Rehabilitation of sanitary sewer main with cured in place pipe (CIPP) from Sibley St to Ramsey St
- Sewer services replaced up to curb stop valve location from Sibley St to Ramsey St.

15th Street East

Street Improvements

<u>Segment</u>	<u>Existing Width</u>	<u>Proposed Width</u>
Tyler St to Bailly St	± 32'	32'

- New concrete curb & gutter.
- Complete reconstruct of street with new base material.
- No new sidewalk segments are proposed.

Utility Improvements

- Complete replacement of water mains and sanitary sewer mains.
- Partial replacement and installation of new storm sewer mains and structures
- Water services to be replaced up to and including curb stop valves.
- Sewer services replaced up to curb stop valve location.

16th Street East

Street Improvements

<u>Segment</u>	<u>Existing Width</u>	<u>Proposed Width</u>
Vermillion St to Florence St	± 36'	± 36'

- New concrete curb & gutter along south side of street from Vermillion St to 125 feet east.
- Spot replacement of concrete curb & gutter on remainder of street.
- Replacement of the blacktop street surface with mill & overlay or full-depth reclamation.
- No new sidewalk segments are proposed.

Utility Improvements

- Replacement of existing storm sewer and sanitary sewer castings.

17th Street East

Street Improvements

<u>Segment</u>	<u>Existing Width</u>	<u>Proposed Width</u>
Ramsey St to Tyler St	± 32'	32'
Tyler St to Sumner Ave	± 34'	36'

- New concrete curb & gutter along both segments.
- Complete reconstruct of street with new base material.
- No new sidewalk segments are proposed.

Utility Improvements

- Complete replacement of water mains and sanitary sewer mains.
- Partial replacement and installation of new storm sewer mains and structures
- Water services to be replaced up to and including curb stop valves.
- Sewer services replaced up to curb stop valve location where the main is being replaced.

Bailly Street

Street Improvements

<u>Segment</u>	<u>Existing Width</u>	<u>Proposed Width</u>
Ramsey St to Sumner Ave	± 36'	32'

- New concrete curb & gutter.
- Complete reconstruct of street with new base material.
- No new sidewalk segments are proposed.

Utility Improvements

- Complete replacement of water mains and sanitary sewer mains.
- Partial replacement and installation of new storm sewer mains and structures
- Water services to be replaced up to and including curb stop valves.
- Sewer services replaced up to curb stop valve location.

Florence Street

Street Improvements

<u>Segment</u>	<u>Existing Width</u>	<u>Proposed Width</u>
15 th St E to 16 th St E	± 32'	± 32'

- Spot replacement of concrete curb & gutter
- Replacement of the blacktop street surface with mill & overlay or full-depth reclamation.
- No new sidewalk segments are proposed.

Utility Improvements

- Rehabilitation of sanitary sewer main with cured in place pipe (CIPP).
- Extension of water main and sanitary sewer main to 16th St W
- Installation of new storm sewer mains and structures.
- Spot replacement of existing sanitary sewer services (and water services that are adjacent).
- Replacement of existing storm sewer and sanitary sewer castings.

McNamara Avenue

Street Improvements

<u>Segment</u>	<u>Existing Width</u>	<u>Proposed Width</u>
Tyler St to Bailly St	± 32'	32'

- New concrete curb & gutter.
- Complete reconstruct of street with new base material.
- Re-alignment of intersection with 17th St & Sumner Ave
- No new sidewalk segments are proposed.

Utility Improvements

- Complete replacement of water mains and sanitary sewer mains.
- Partial replacement and installation of new storm sewer mains and structures
- Water services to be replaced up to and including curb stop valves.
- Sewer services replaced up to curb stop valve location.

Sumner Avenue

Street Improvements

<u>Segment</u>	<u>Existing Width</u>	<u>Proposed Width</u>
17 th St E to 18 th St E	± 32'	28'

- New concrete curb & gutter.
- Complete reconstruct of street with new base material.
- Re-alignment of intersection with 17th St & McNamara Ave.
- No new sidewalk segments are proposed.

Utility Improvements

- Complete replacement of water mains and sanitary sewer mains.
- Installation of new storm sewer mains and structures
- Water services to be replaced up to and including curb stop valves.
- Sewer services replaced up to curb stop valve location.

**CITY OF
HASTINGS
CITY HALL**

101 4th Street East
Hastings, MN 55033-1955
651-480-2350
Fax: 651-437-7082
www.ci.hastings.mn.us
cityhall@ci.hastings.mn.us

Department of
Building Safety
651-480-2342

Engineering/
Planning/HRA/HPC
651-480-2334

Public Works
1225 Progress Drive
651-480-6185

Parks & Recreation
920 10th Street West
651-480-6175

Police
150 3rd Street East
651-480-2300

Fire
115 5th Street West
651-480-6150

Civic Arena
2801 Red Wing Boulevard
651-480-6159

Aquatic Center
901 Maple Street
651-480-2392

February 2011

IMPORTANT NOTICE - - PLEASE READ

Dear Property Owner/Manager:

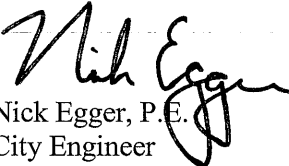
In an effort to reduce the amount of future service repairs within the street segments listed above that are to be paved this summer, the City is offering a service line repair program as a component of the above referenced project. If you have experienced any sanitary sewer service, water service or drainage problems, please notify the Engineering Department at 651-480-2334 as soon as possible. We will coordinate with the Public Works Department to have those problems investigated so that if necessary, they can be fixed during the construction project to help you avoid costly repairs in the future. ***If the projects are approved for construction by the City Council, we would like to complete all investigations by the end of April.***

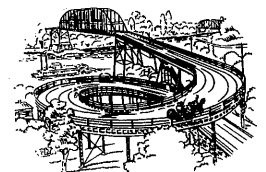
The investigation will be done at no cost to you, and will include a video inspection of your sanitary sewer service line. Public Works personnel will need to have access to a cleanout on the service line. This cleanout is typically located in the basement or crawl space. If you request an inspection, you will be contacted to arrange a time at your convenience.

If the investigation identifies a defect with your service line and that defect is located within the City Right-of-Way, the replacement or repair will be added to the project contract and will be done in conjunction with the street repair work this summer at no cost to you. If the investigation identifies a defect with your service line and that defect is located outside of the City Right-of-Way (on private property), you may choose to have that portion of the service line repaired or replaced at your cost and on your schedule.

If you have any questions, please contact the Engineering Department at 651-480-2334.

Sincerely,


Nick Egger, P.E.
City Engineer



Hastings on the Mississippi

CITY OF HASTINGS ENGINEERING DEPARTMENT

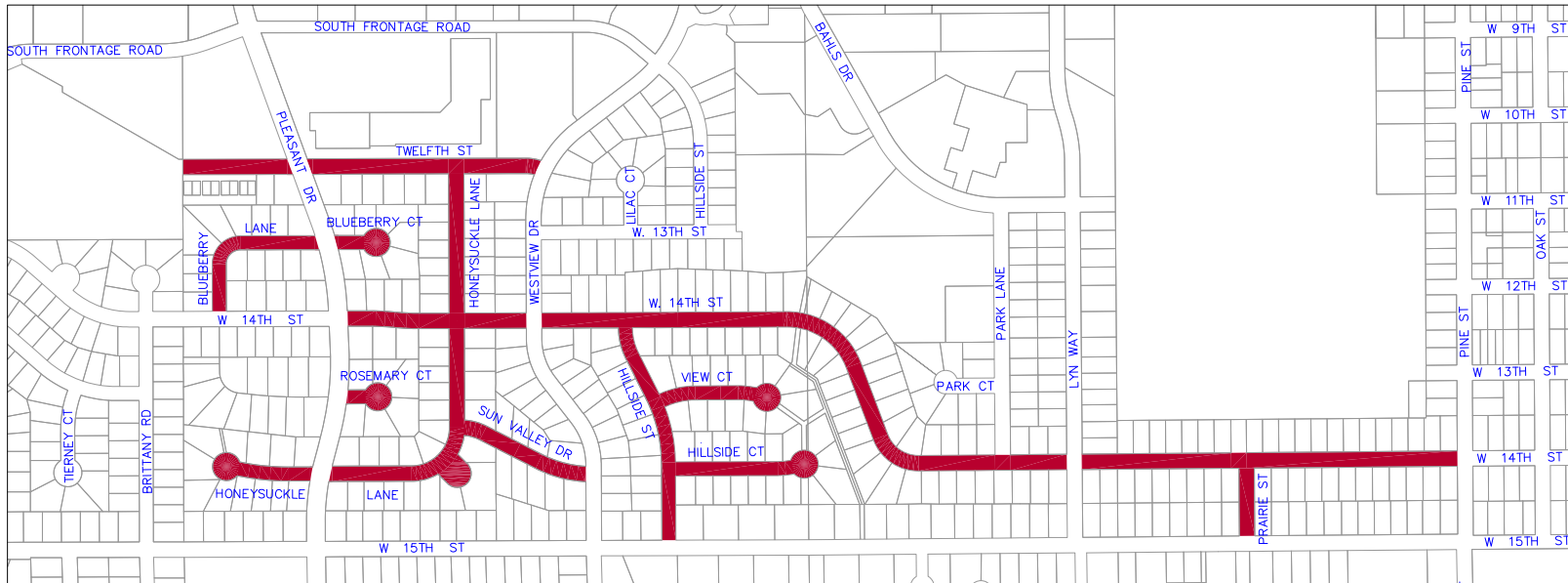
CITY PROJECT 2011-1 2011 INFRASTRUCTURE IMPROVEMENTS

LEGEND		
UTILITIES AND TOPOGRAPHIC FEATURES		
EXISTING NTS	FEATURE	PROPOSED NTS
	CATCH BASIN (2 x 3)	
	CATCH BASIN (ROUND)	
	MANHOLE (STORM)	
	STORM SEWER	
	FLARED END SECTION	
	MANHOLE (SANITARY)	REPLACE NEW
	SANITARY SEWER	
	CURB STOP	
	FIRE HYDRANT	
	GATE VALVE (WATER)	
	WATER	
	CURB	
	CURB CUT	
	RETAINING WALL	
	CONCRETE DRIVEWAY	
	CONCRETE SIDEWALK	
	ROW & PROP LINE	
	EASEMENT LINE	
	ELECTRIC (UNDERGROUND)	
	GAS	
	OVERHEAD UTILITY	
	TELEPHONE (UNDERGROUND)	
	CABLE TV (UNDERGROUND)	
	FENCE	
	CONSTRUCTION LIMITS	
	BITUMINOUS PAVEMENT	
	CONCRETE PAVEMENT	
	POWER POLE WITH ANCHOR	
	SOIL BORING LOCATION	
	TREE (DECIDUOUS)	
	TREE (CONIFEROUS)	
	SHRUB	
	TREE LINE	
	UTILITY CROSSING (PROFILE)	
	LIGHT POLE	
	MAILBOX	

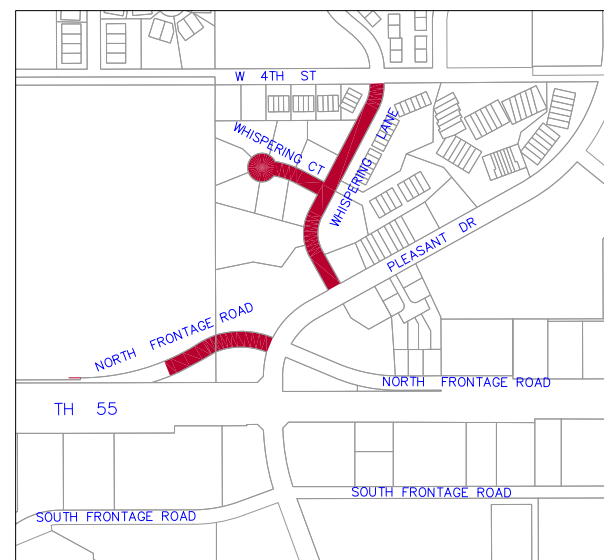
- ### NOTES
1. THE 2005 EDITION OF THE MINNESOTA DEPARTMENT OF TRANSPORTATION "STANDARD SPECIFICATIONS FOR CONSTRUCTION" AND THE CITY OF HASTINGS "STANDARD SPECIFICATIONS" FOR CONSTRUCTION REV. 2007 SHALL GOVERN
 2. THE SUBSURFACE UTILITY INFORMATION IN THIS PLAN IS UTILITY QUALITY LEVEL "C". THIS UTILITY QUALITY LEVEL WAS DETERMINED ACCORDING TO THE GUIDELINES OF CI/ASCE 38-02, ENTITLED "STANDARD GUIDELINES FOR THE COLLECTION AND DEPICTION OF EXISTING SUBSURFACE UTILITY DATA."
 3. PRIOR TO DIGGING, IT IS REQUIRED BY LAW TO CALL GOPHER STATE ONE CALL FOR UTILITY LOCATIONS 651-454-0002
 4. IT SHALL BE THE CONTRACTOR'S RESPONSIBILITY TO NOTIFY APPROPRIATE UTILITY COMPANIES DUE TO CONFLICTS BEFORE OR DURING CONSTRUCTION. THE CITY SHALL NOT BE HELD LIABLE
 5. ALL TRAFFIC CONTROL DEVICES AND SIGNING SHALL CONFORM TO THE LATEST EDITION OF THE MINNESOTA MANUAL ON UNIFORM TRAFFIC CONTROL DEVICES (MMUTCD), INCLUDING THE FIELD MANUAL FOR TEMPORARY TRAFFIC CONTROL ZONE LAYOUTS

DRAWING SCALE

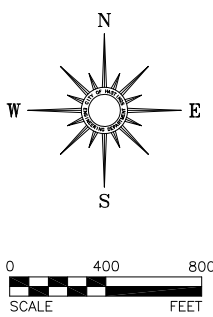
	HORIZONTAL	VERTICAL
PLANS		
PROFILES		
CROSS SECTIONS		



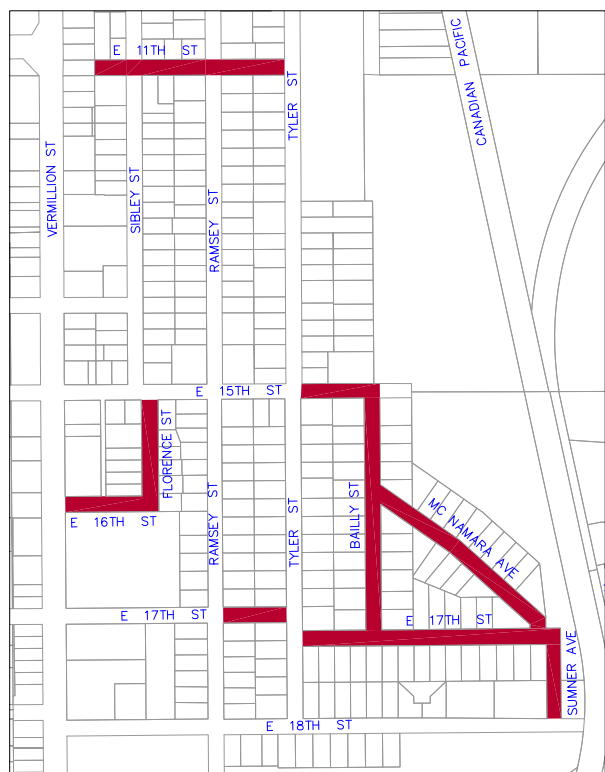
AREA 1



AREA 2
(ALTERNATE)



VICINITY MAPS



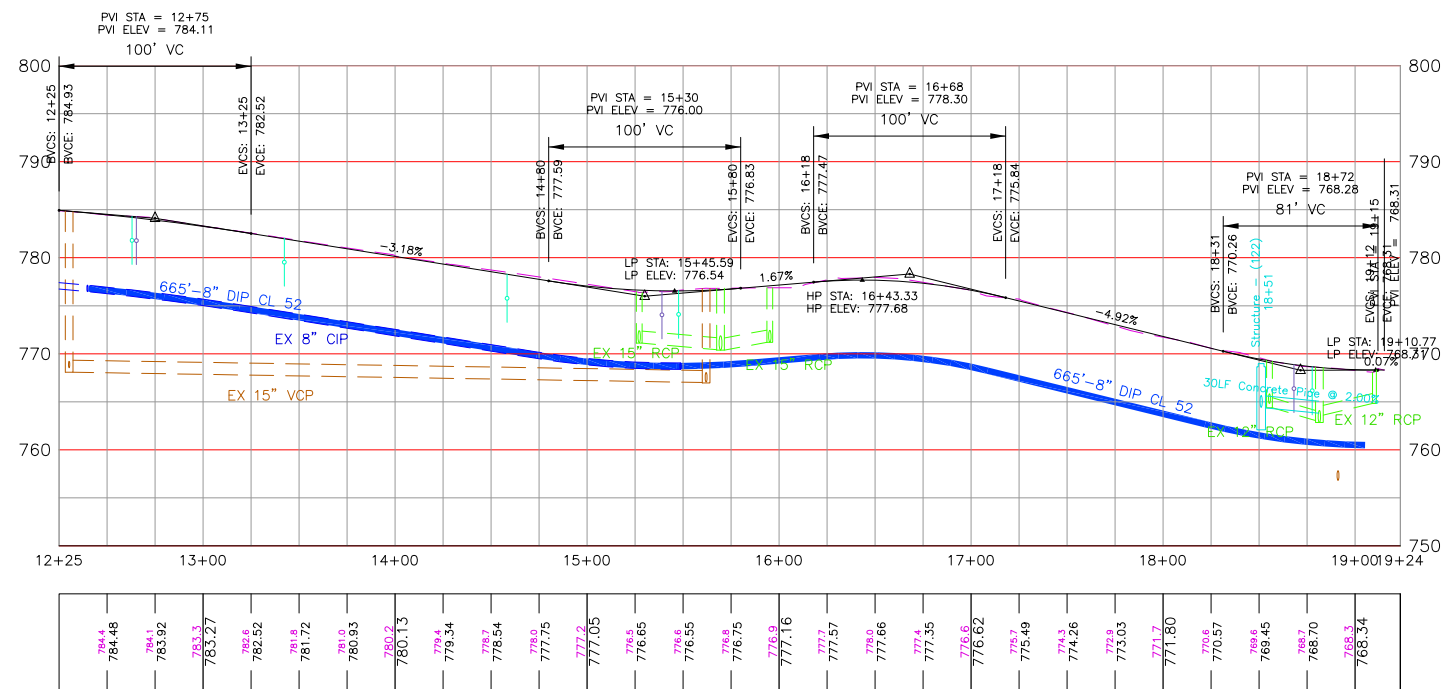
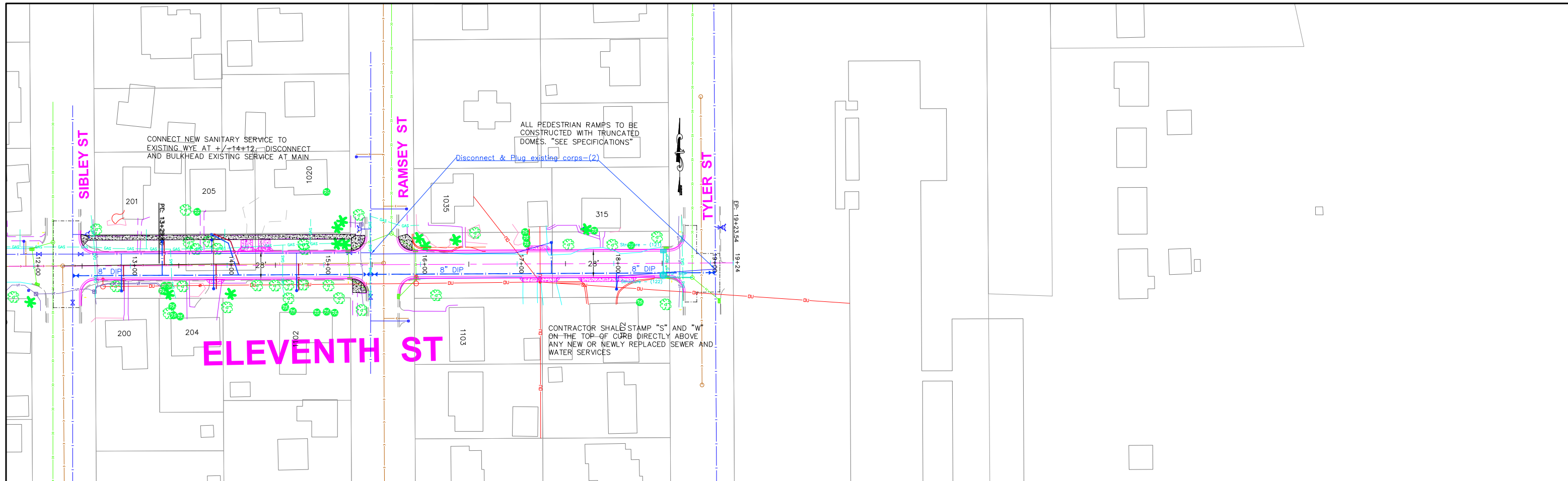
AREAS 3 & 4
(ALTERNATE)

CONTENTS

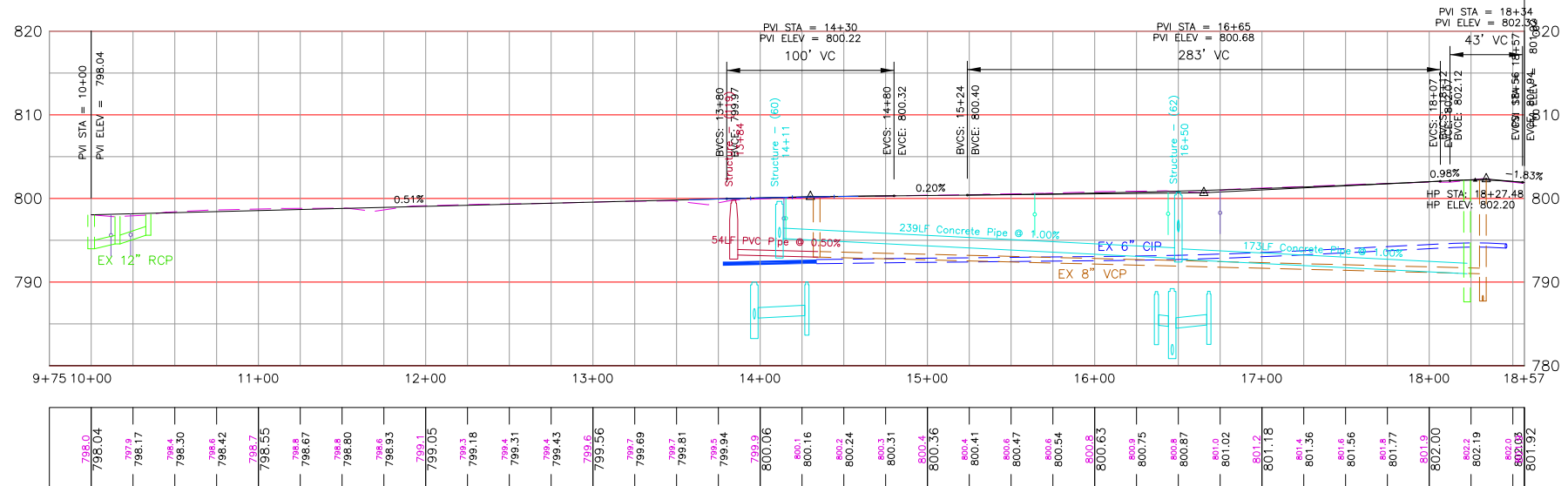
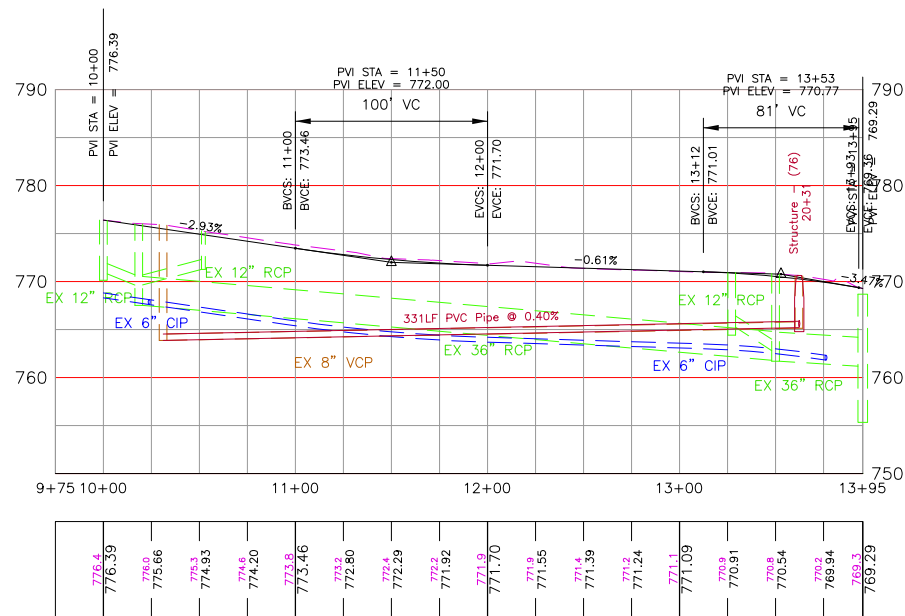
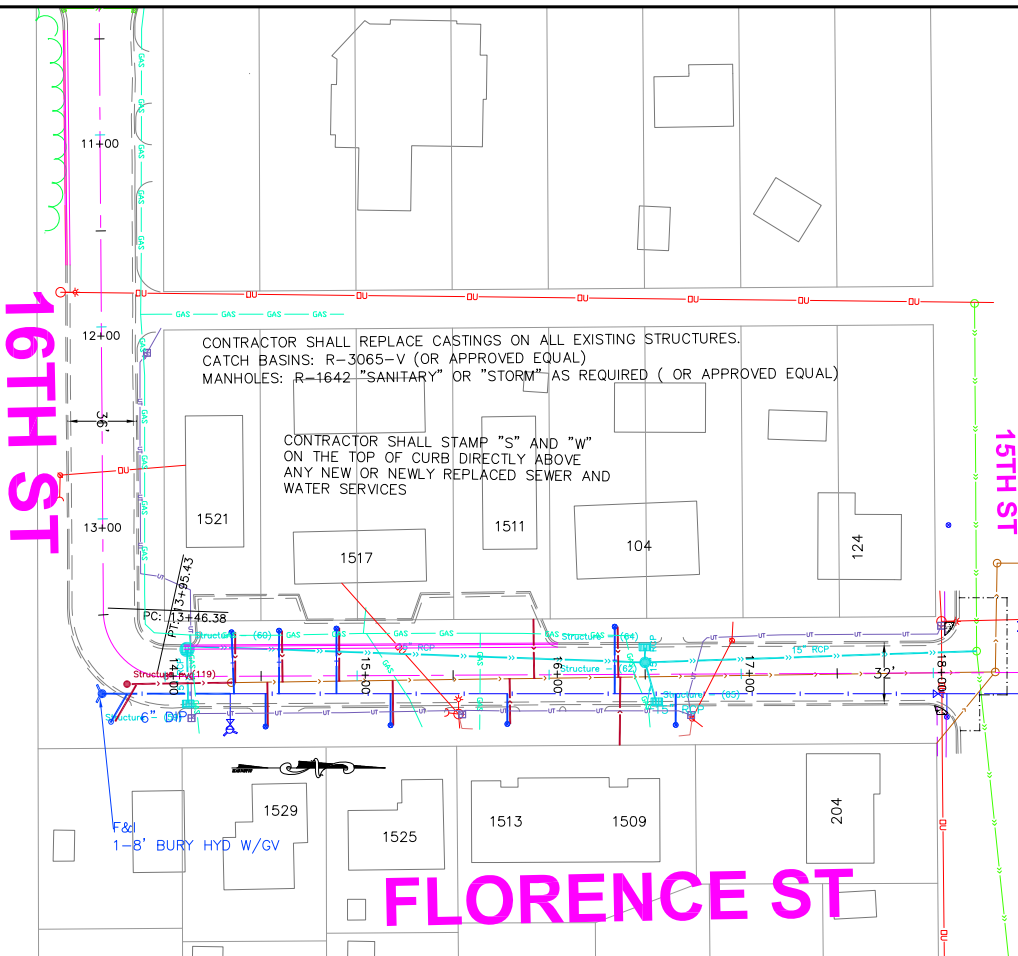
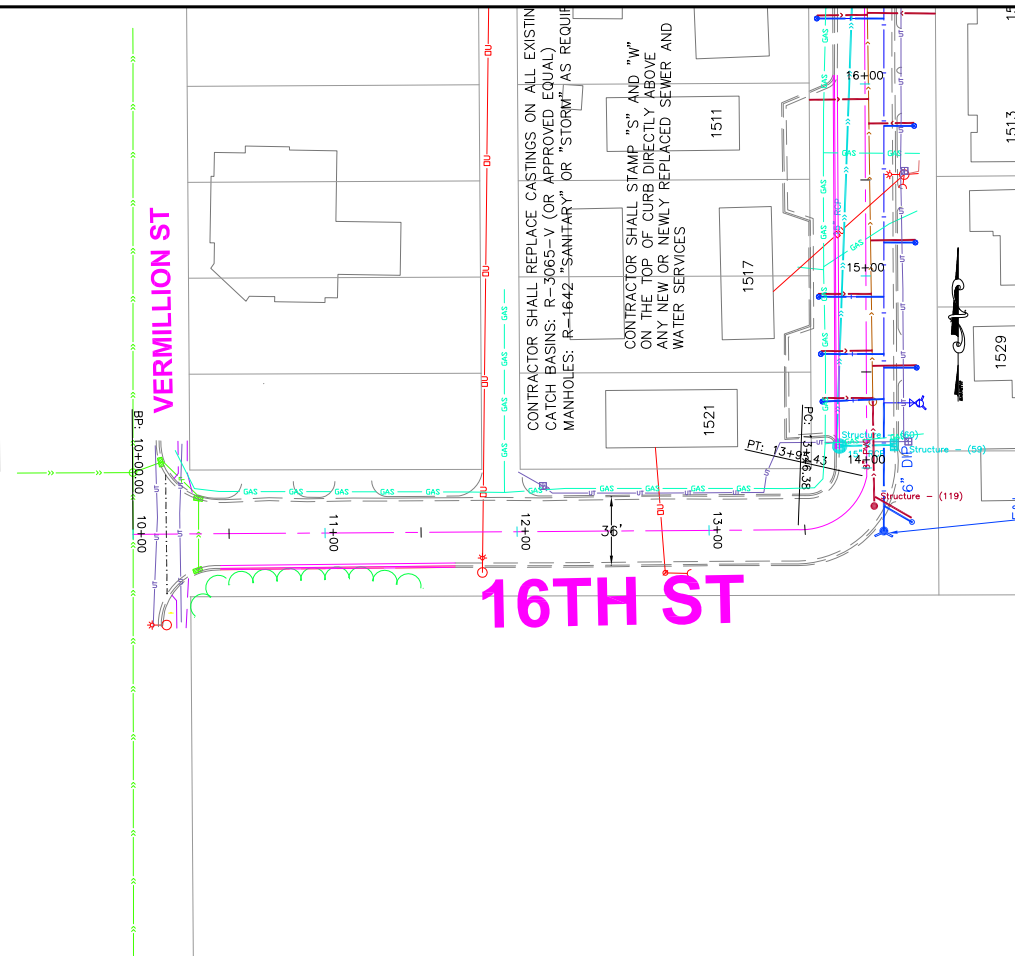
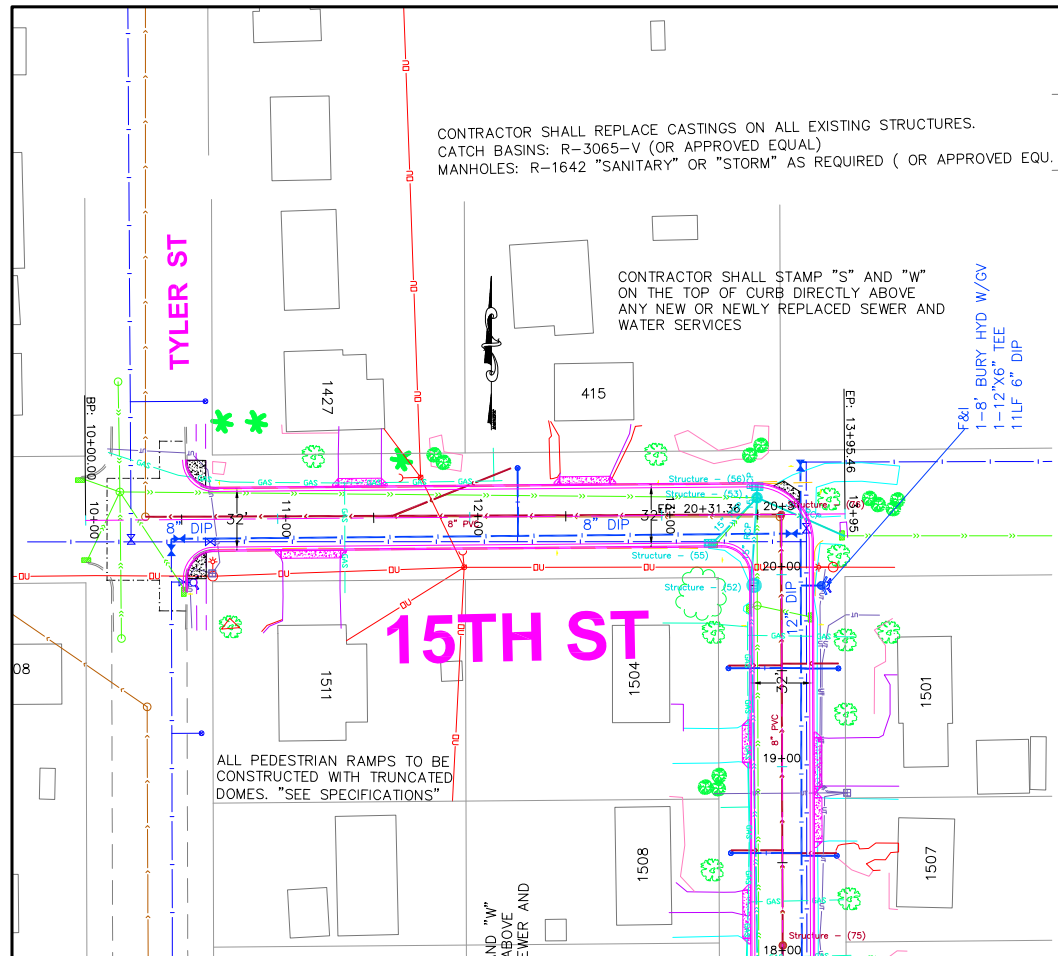
GENERAL SHEETS	
SHEET	DESCRIPTION
1	TITLE SHEET
2	ESTIMATED QUANTITIES 1 OF 2
3	ESTIMATED QUANTITIES 2 OF 2
4	DETAILS
5	TYPICAL SECTIONS 1 OF 5
6	TYPICAL SECTIONS 2 OF 5
7	TYPICAL SECTIONS 3 OF 5
8	TYPICAL SECTIONS 4 OF 5
9	TYPICAL SECTIONS 5 OF 5
10	RETAINING WALL DETAILS 1 OF 5
11	RETAINING WALL DETAILS 2 OF 5
12	RETAINING WALL DETAILS 3 OF 5
13	RETAINING WALL DETAILS 4 OF 5
14	RETAINING WALL DETAILS 5 OF 5
15	STORM WATER POLLUTION PREVENTION PLAN
STREET PLAN & PROFILE SHEETS	
AREA 1	
16	12TH STREET PLAN & PROFILE
17	BLUEBERRY LN PLAN & PROFILE
18	BLUEBERRY CT & ROSEMARY CT PLAN & PROFILE
19	14TH ST PLAN & PROFILE - PLEASANT DR TO WESTVIEW DR
20	14TH ST PLAN & PROFILE - WESTVIEW DR TO W OF PARK LN
21	14TH ST PLAN & PROFILE - W OF PARK LN TO E OF LYN WAY
22	14TH ST PLAN & PROFILE - E OF LYN WAY TO PINE ST
23	HONEYSUCKLE LN PLAN & PROFILE - WEST END TO SUN VALLEY DR
24	HONEYSUCKLE LN PLAN & PROFILE - SUN VALLEY DR TO 12TH ST
25	SUN VALLEY DRIVE PLAN & PROFILE
26	HILLSIDE ST PLAN & PROFILE - 15TH ST TO 14TH ST
27	VIEW CT & HILLSIDE CT PLAN & PROFILE
28	PRAIRIE ST PLAN & PROFILE - 15TH ST TO 14TH ST
AREA 2 (ALTERNATE)	
29	WHISPERING LN PLAN & PROFILE - PLEASANT DR TO 4TH ST
30	WHISPERING CT & NORTH FRONTAGE RD PLAN & PROFILE
AREAS 3 & 4 (ALTERNATE)	
31	11TH ST PLAN & PROFILE - VERMILLION ST TO TYLER ST
32	15TH ST, 16TH ST & FLORENCE ST PLAN & PROFILE
33	MCMAMARA AVE & SUMNER AVE PLAN & PROFILE
34	BAILLY ST PLAN & PROFILE - 17TH ST TO 15TH ST
35	17TH ST PLAN & PROFILE - RAMSEY ST TO SUMNER AVE

CROSS SECTION SHEETS

SHT	DESCRIPTION	SHT	DESCRIPTION
36	12TH ST W XX+XX TO XX+XX	71	SUN VALLEY DR XX+XX TO XX+XX
37	12TH ST W XX+XX TO XX+XX	72	SUN VALLEY DR XX+XX TO XX+XX
38	12TH ST W XX+XX TO XX+XX	73	HILLSIDE ST XX+XX TO XX+XX
39	12TH ST W XX+XX TO XX+XX	74	HILLSIDE ST XX+XX TO XX+XX
40	12TH ST W XX+XX TO XX+XX	75	HILLSIDE ST XX+XX TO XX+XX
41	BLUEBERRY LN XX+XX TO XX+XX	76	VIEW CT XX+XX TO XX+XX
42	BLUEBERRY LN XX+XX TO XX+XX	77	VIEW CT XX+XX TO XX+XX
43	BLUEBERRY LN XX+XX TO XX+XX	78	HILLSIDE CT XX+XX TO XX+XX
44	BLUEBERRY CT XX+XX TO XX+XX	79	HILLSIDE CT XX+XX TO XX+XX
45	14TH ST W XX+XX TO XX+XX	80	PRAIRIE ST XX+XX TO XX+XX
46	14TH ST W XX+XX TO XX+XX	81	WHISPERING LN XX+XX TO XX+XX
47	14TH ST W XX+XX TO XX+XX	82	WHISPERING LN XX+XX TO XX+XX
48	14TH ST W XX+XX TO XX+XX	83	WHISPERING LN XX+XX TO XX+XX
49	14TH ST W XX+XX TO XX+XX	84	WHISPERING CT XX+XX TO XX+XX
50	14TH ST W XX+XX TO XX+XX	85	WHISPERING CT XX+XX TO XX+XX
51	14TH ST W XX+XX TO XX+XX	86	N FRONTAGE RD XX+XX TO XX+XX
52	14TH ST W XX+XX TO XX+XX	87	11TH ST E XX+XX TO XX+XX
53	14TH ST W XX+XX TO XX+XX	88	11TH ST E XX+XX TO XX+XX
54	14TH ST W XX+XX TO XX+XX	89	11TH ST E XX+XX TO XX+XX
55	14TH ST W XX+XX TO XX+XX	90	15TH ST E XX+XX TO XX+XX
56	14TH ST W XX+XX TO XX+XX	91	16TH ST E XX+XX TO XX+XX
57	14TH ST W XX+XX TO XX+XX	92	FLORENCE ST XX+XX TO XX+XX
58	14TH ST W XX+XX TO XX+XX	93	MCMAMARA AVE XX+XX TO XX+XX
59	14TH ST W XX+XX TO XX+XX	94	MCMAMARA AVE XX+XX TO XX+XX
60	14TH ST W XX+XX TO XX+XX	95	MCMAMARA AVE XX+XX TO XX+XX
61	14TH ST W XX+XX TO XX+XX	96	SUMNER AVE XX+XX TO XX+XX
62	ROSEMARY CT XX+XX TO XX+XX	97	BAILLY ST XX+XX TO XX+XX
63	HONEYSUCKLE CT XX+XX TO XX+XX	98	BAILLY ST XX+XX TO XX+XX
64	HONEYSUCKLE CT XX+XX TO XX+XX	99	BAILLY ST XX+XX TO XX+XX
65	HONEYSUCKLE LN XX+XX TO XX+XX	100	BAILLY ST XX+XX TO XX+XX
66	HONEYSUCKLE LN XX+XX TO XX+XX	101	17TH ST E XX+XX TO XX+XX
67	HONEYSUCKLE LN XX+XX TO XX+XX	102	17TH ST E XX+XX TO XX+XX
68	HONEYSUCKLE LN XX+XX TO XX+XX	103	17TH ST E XX+XX TO XX+XX
69	HONEYSUCKLE LN XX+XX TO XX+XX	104	17TH ST E XX+XX TO XX+XX
70	HONEYSUCKLE LN XX+XX TO XX+XX	105	17TH ST E XX+XX TO XX+XX



784.48	784.92	785.37	785.77	786.17	786.57	786.97	787.37	787.77	788.17	788.57	788.97	789.37	789.77	790.17	790.57	790.97	791.37	791.77	792.17	792.57	792.97	793.37	793.77	794.17	794.57	794.97	795.37	795.77	796.17	796.57	796.97	797.37	797.77	798.17	798.57	798.97	799.37	799.77	800.17	800.57	800.97	801.37	801.77	802.17	802.57	802.97	803.37	803.77	804.17	804.57	804.97	805.37	805.77	806.17	806.57	806.97	807.37	807.77	808.17	808.57	808.97	809.37	809.77	810.17	810.57	810.97	811.37	811.77	812.17	812.57	812.97	813.37	813.77	814.17	814.57	814.97	815.37	815.77	816.17	816.57	816.97	817.37	817.77	818.17	818.57	818.97	819.37	819.77	820.17	820.57	820.97	821.37	821.77	822.17	822.57	822.97	823.37	823.77	824.17	824.57	824.97	825.37	825.77	826.17	826.57	826.97	827.37	827.77	828.17	828.57	828.97	829.37	829.77	830.17	830.57	830.97	831.37	831.77	832.17	832.57	832.97	833.37	833.77	834.17	834.57	834.97	835.37	835.77	836.17	836.57	836.97	837.37	837.77	838.17	838.57	838.97	839.37	839.77	840.17	840.57	840.97	841.37	841.77	842.17	842.57	842.97	843.37	843.77	844.17	844.57	844.97	845.37	845.77	846.17	846.57	846.97	847.37	847.77	848.17	848.57	848.97	849.37	849.77	850.17	850.57	850.97	851.37	851.77	852.17	852.57	852.97	853.37	853.77	854.17	854.57	854.97	855.37	855.77	856.17	856.57	856.97	857.37	857.77	858.17	858.57	858.97	859.37	859.77	860.17	860.57	860.97	861.37	861.77	862.17	862.57	862.97	863.37	863.77	864.17	864.57	864.97	865.37	865.77	866.17	866.57	866.97	867.37	867.77	868.17	868.57	868.97	869.37	869.77	870.17	870.57	870.97	871.37	871.77	872.17	872.57	872.97	873.37	873.77	874.17	874.57	874.97	875.37	875.77	876.17	876.57	876.97	877.37	877.77	878.17	878.57	878.97	879.37	879.77	880.17	880.57	880.97	881.37	881.77	882.17	882.57	882.97	883.37	883.77	884.17	884.57	884.97	885.37	885.77	886.17	886.57	886.97	887.37	887.77	888.17	888.57	888.97	889.37	889.77	890.17	890.57	890.97	891.37	891.77	892.17	892.57	892.97	893.37	893.77	894.17	894.57	894.97	895.37	895.77	896.17	896.57	896.97	897.37	897.77	898.17	898.57	898.97	899.37	899.77	900.17	900.57	900.97	901.37	901.77	902.17	902.57	902.97	903.37	903.77	904.17	904.57	904.97	905.37	905.77	906.17	906.57	906.97	907.37	907.77	908.17	908.57	908.97	909.37	909.77	910.17	910.57	910.97	911.37	911.77	912.17	912.57	912.97	913.37	913.77	914.17	914.57	914.97	915.37	915.77	916.17	916.57	916.97	917.37	917.77	918.17	918.57	918.97	919.37	919.77	920.17	920.57	920.97	921.37	921.77	922.17	922.57	922.97	923.37	923.77	924.17	924.57	924.97	925.37	925.77	926.17	926.57	926.97	927.37	927.77	928.17	928.57	928.97	929.37	929.77	930.17	930.57	930.97	931.37	931.77	932.17	932.57	932.97	933.37	933.77	934.17	934.57	934.97	935.37	935.77	936.17	936.57	936.97	937.37	937.77	938.17	938.57	938.97	939.37	939.77	940.17	940.57	940.97	941.37	941.77	942.17	942.57	942.97	943.37	943.77	944.17	944.57	944.97	945.37	945.77	946.17	946.57	946.97	947.37	947.77	948.17	948.57	948.97	949.37	949.77	950.17	950.57	950.97	951.37	951.77	952.17	952.57	952.97	953.37	953.77	954.17	954.57	954.97	955.37	955.77	956.17	956.57	956.97	957.37	957.77	958.17	958.57	958.97	959.37	959.77	960.17	960.57	960.97	961.37	961.77	962.17	962.57	962.97	963.37	963.77	964.17	964.57	964.97	965.37	965.77	966.17	966.57	966.97	967.37	967.77	968.17	968.57	968.97	969.37	969.77	970.17	970.57	970.97	971.37	971.77	972.17	972.57	972.97	973.37	973.77	974.17	974.57	974.97	975.37	975.77	976.17	976.57	976.97	977.37	977.77	978.17	978.57	978.97	979.37	979.77	980.17	980.57	980.97	981.37	981.77	982.17	982.57	982.97	983.37	983.77	984.17	984.57	984.97	985.37	985.77	986.17	986.57	986.97	987.37	987.77	988.17	988.57	988.97	989.37	989.77	990.17	990.57	990.97	991.37	991.77	992.17	992.57	992.97	993.37	993.77	994.17	994.57	994.97	995.37	995.77	996.17	996.57	996.97	997.37	997.77	998.17	998.57	998.97	999.37	999.77	1000.17	1000.57	1000.97	1001.37	1001.77	1002.17	1002.57	1002.97	1003.37	1003.77	1004.17	1004.57	1004.97	1005.37	1005.77	1006.17	1006.57	1006.97	1007.37	1007.77	1008.17	1008.57	1008.97	1009.37	1009.77	1010.17	1010.57	1010.97	1011.37	1011.77	1012.17	1012.57	1012.97	1013.37	1013.77	1014.17	1014.57	1014.97	1015.37	1015.77	1016.17	1016.57	1016.97	1017.37	1017.77	1018.17	1018.57	1018.97	1019.37	1019.77	1020.17	1020.57	1020.97	1021.37	1021.77	1022.17	1022.57	1022.97	1023.37	1023.77	1024.17	1024.57	1024.97	1025.37	1025.77	1026.17	1026.57	1026.97	1027.37	1027.77	1028.17	1028.57	1028.97	1029.37	1029.77	1030.17	1030.57	1030.97	1031.37	1031.77	1032.17	1032.57	1032.97	1033.37	1033.77	1034.17	1034.57	1034.97	1035.37	1035.77	1036.17	1036.57	1036.97	1037.37	1037.77	1038.17	1038.57	1038.97	1039.37	1039.77	1040.17	1040.57	1040.97	1041.37	1041.77	1042.17	1042.57	1042.97	1043.37	1043.77	1044.17	1044.57	1044.97	1045.37	1045.77	1046.17	1046.57	1046.97	1047.37	1047.77	1048.17	1048.57	1048.97	1049.37	1049.77	1050.17	1050.57	1050.97	1051.37	1051.77	1052.17	1052.57	1052.97	1053.37	1053.77	1054.17	1054.57	1054.97	1055.37	1055.77	1056.17	1056.57	1056.97	1057.37	1057.77	1058.17	1058.57	1058.97	1059.37	1059.77	1060.17	1060.57	1060.97	1061.37	1061.77	1062.17	1062.57	1062.97	1063.37	1063.77	1064.17	1064.57	1064.97	1065.37	1065.77	1066.17	1066.57	1066.97	1067.37	1067.77	1068.17	1068.57	1068.97	1069.37	1069.77	1070.17	1070.57	1070.97	1071.37	1071.77	1072.17	1072.57	1072.97	1073.37	1073.77	1074.17	1074.57	1074.97	1075.37	1075.77	1076.17	1076.57	1076.97	1077.37	1077.77	1078.17	1078.57	1078.97	1079.37	1079.77	1080.17	1080.57	1080.97	1081.37	1081.77	1082.17	1082.57	1082.97	1083.37	1083.77	1084.17	1084.57	1084.97	1085.37	1085.77	1086.17	1086.57	1086.97	1087.37	1087.77	1088.17	1088.57	1088.97	1089.37	1089.77	1090.17	1090.57	1090.97	1091.37	1091.77	1092.17	1092.57	1092.97	1093.37	1093.77	1094.17	1094.57	1094.97	1095.37	1095.77	1096.17	1096.57	1096.97	1097.37	1097.77	1098.17	1098.57	1098.97	1099.37	1099.77	1100.17	1100.57	1100.97	1101.37	1101.77	1102.17	1102.57	1102.97	1103.37	1103.77	1104.17	1104.57	1104.97	1105.37	1105.77	1106.17	1106.57	1106.97	1107.37	1107.77	1108.17	1108.57	1108.97	1109.37	1109.77	1110.17	1110.57	1110.97	1111.37	1111.77	1112.17	1112.57	1112.97	1113.37	1113.77	1114.17	1114.57	1114.97	1115.37	1115.77	1116.17	1116.57	1116.97	1117.37	1117.77	1118.17	1118.57	1118.97	1119.37	1119.77	1120.17	1120.57	1120.97	1121.37	1121.77	1122.17	1122.57	1122.97	1123.37	1123.77	1124.17	1124.57	1124.97	1125.37	1125.77	1126.17	1126.57	1126.97	1127.37	1127.77	1128.17	1128.57	1128.97	1129.37	1129.77	1130.17	1130.57	1130.97	1131.37	1131.77	1132.17	1132.57	1132.97	1133.37	1133.77	1134.17	1134.57	1134.97	1135.37	1135.77	1136.17	1136.57	1136.97	1137.37	1137.77	1138.17	1138.57	1138.97	1139.37	1139.77	1140.17	1140.57	1140.97	1141.37	1141.77	1142.17	1142.57	1142.97	1143.37	1143.77	1144.17	1144.57	1144.97	1145.37	1145.77	1146.17	1146.57	1146.97	1147.37	1147.77	1148.17	1148.57	1148.97	1149.37	1149.77	1150.17	1150.57	1150.97	1151.37	1151.77	1152.17	1152.57	1152.97	1153.37	1153.77	1154.17	1154.57	1154.97	1155.37	1155.77	1156.17	1156.57	1156.97	1157.37	1157.77	1158.17	1158.57	1158.97	1159.37	1159.77	1160.17	1160.57	1160.97	1161.37	1161.77	1162.17	1162.57	1162.97	1163.37	1163.77	1164.17	1164.57	1164.97	1165.37	1165.77	1166.17	1166.57	1166.97	1167.37	1167.77	1168.17	1168.57	1168.97	1169.37	1169.77	1170.17	1170.57	1170.97	1171.37	1171.77	1172.17	1172.57	1172.97	1173.37	1173.77	1174.17	1174.57	1174.97	1175.37	1175.77	1176.17	1176.57	1176.97	1177.37	1177.77	1178.17	1178.57	1178.97	1179.37	1179.77	1180.17	1180.57	1180.97	1181.37	1181.77	1182.17	1182.57	1182.97	1183.37	1183.77	1184.17	1184.57	1184.97	1185.37	1185.77	1186.17	1186.57	1186.97	1187.37	1187.77	1188.17	1188.57	1188.97	1189.37	1189.77	1190.17	1190.57	1190.97	1191.37
--------	--------	--------	--------	--------	--------	--------	--------	--------	--------	--------	--------	--------	--------	--------	--------	--------	--------	--------	--------	--------	--------	--------	--------	--------	--------	--------	--------	--------	--------	--------	--------	--------	--------	--------	--------	--------	--------	--------	--------	--------	--------	--------	--------	--------	--------	--------	--------	--------	--------	--------	--------	--------	--------	--------	--------	--------	--------	--------	--------	--------	--------	--------	--------	--------	--------	--------	--------	--------	--------	--------	--------	--------	--------	--------	--------	--------	--------	--------	--------	--------	--------	--------	--------	--------	--------	--------	--------	--------	--------	--------	--------	--------	--------	--------	--------	--------	--------	--------	--------	--------	--------	--------	--------	--------	--------	--------	--------	--------	--------	--------	--------	--------	--------	--------	--------	--------	--------	--------	--------	--------	--------	--------	--------	--------	--------	--------	--------	--------	--------	--------	--------	--------	--------	--------	--------	--------	--------	--------	--------	--------	--------	--------	--------	--------	--------	--------	--------	--------	--------	--------	--------	--------	--------	--------	--------	--------	--------	--------	--------	--------	--------	--------	--------	--------	--------	--------	--------	--------	--------	--------	--------	--------	--------	--------	--------	--------	--------	--------	--------	--------	--------	--------	--------	--------	--------	--------	--------	--------	--------	--------	--------	--------	--------	--------	--------	--------	--------	--------	--------	--------	--------	--------	--------	--------	--------	--------	--------	--------	--------	--------	--------	--------	--------	--------	--------	--------	--------	--------	--------	--------	--------	--------	--------	--------	--------	--------	--------	--------	--------	--------	--------	--------	--------	--------	--------	--------	--------	--------	--------	--------	--------	--------	--------	--------	--------	--------	--------	--------	--------	--------	--------	--------	--------	--------	--------	--------	--------	--------	--------	--------	--------	--------	--------	--------	--------	--------	--------	--------	--------	--------	--------	--------	--------	--------	--------	--------	--------	--------	--------	--------	--------	--------	--------	--------	--------	--------	--------	--------	--------	--------	--------	--------	--------	--------	--------	--------	--------	--------	--------	--------	--------	--------	--------	--------	--------	--------	--------	--------	--------	--------	--------	--------	--------	--------	--------	--------	--------	--------	--------	--------	--------	--------	--------	--------	--------	--------	--------	--------	--------	--------	--------	--------	--------	--------	--------	--------	--------	--------	--------	--------	--------	--------	--------	--------	--------	--------	--------	--------	--------	--------	--------	--------	--------	--------	--------	--------	--------	--------	--------	--------	--------	--------	--------	--------	--------	--------	--------	--------	--------	--------	--------	--------	--------	--------	--------	--------	--------	--------	--------	--------	--------	--------	--------	--------	--------	--------	--------	--------	--------	--------	--------	--------	--------	--------	--------	--------	--------	--------	--------	--------	--------	--------	--------	--------	--------	--------	--------	--------	--------	--------	--------	--------	--------	--------	--------	--------	--------	--------	--------	--------	--------	--------	--------	--------	--------	--------	--------	--------	--------	--------	--------	--------	--------	--------	--------	--------	--------	--------	--------	--------	--------	--------	--------	--------	--------	--------	--------	--------	--------	--------	--------	--------	--------	--------	--------	--------	--------	--------	--------	--------	--------	--------	--------	--------	--------	--------	--------	--------	--------	--------	--------	--------	--------	--------	--------	--------	--------	--------	--------	--------	--------	--------	--------	--------	--------	--------	--------	--------	--------	--------	--------	--------	--------	--------	--------	--------	--------	--------	--------	--------	--------	--------	--------	--------	--------	--------	--------	--------	--------	--------	--------	--------	--------	--------	--------	--------	--------	--------	--------	--------	--------	--------	--------	--------	--------	--------	--------	--------	--------	--------	--------	--------	--------	--------	--------	--------	--------	--------	---------	---------	---------	---------	---------	---------	---------	---------	---------	---------	---------	---------	---------	---------	---------	---------	---------	---------	---------	---------	---------	---------	---------	---------	---------	---------	---------	---------	---------	---------	---------	---------	---------	---------	---------	---------	---------	---------	---------	---------	---------	---------	---------	---------	---------	---------	---------	---------	---------	---------	---------	---------	---------	---------	---------	---------	---------	---------	---------	---------	---------	---------	---------	---------	---------	---------	---------	---------	---------	---------	---------	---------	---------	---------	---------	---------	---------	---------	---------	---------	---------	---------	---------	---------	---------	---------	---------	---------	---------	---------	---------	---------	---------	---------	---------	---------	---------	---------	---------	---------	---------	---------	---------	---------	---------	---------	---------	---------	---------	---------	---------	---------	---------	---------	---------	---------	---------	---------	---------	---------	---------	---------	---------	---------	---------	---------	---------	---------	---------	---------	---------	---------	---------	---------	---------	---------	---------	---------	---------	---------	---------	---------	---------	---------	---------	---------	---------	---------	---------	---------	---------	---------	---------	---------	---------	---------	---------	---------	---------	---------	---------	---------	---------	---------	---------	---------	---------	---------	---------	---------	---------	---------	---------	---------	---------	---------	---------	---------	---------	---------	---------	---------	---------	---------	---------	---------	---------	---------	---------	---------	---------	---------	---------	---------	---------	---------	---------	---------	---------	---------	---------	---------	---------	---------	---------	---------	---------	---------	---------	---------	---------	---------	---------	---------	---------	---------	---------	---------	---------	---------	---------	---------	---------	---------	---------	---------	---------	---------	---------	---------	---------	---------	---------	---------	---------	---------	---------	---------	---------	---------	---------	---------	---------	---------	---------	---------	---------	---------	---------	---------	---------	---------	---------	---------	---------	---------	---------	---------	---------	---------	---------	---------	---------	---------	---------	---------	---------	---------	---------	---------	---------	---------	---------	---------	---------	---------	---------	---------	---------	---------	---------	---------	---------	---------	---------	---------	---------	---------	---------	---------	---------	---------	---------	---------	---------	---------	---------	---------	---------	---------	---------	---------	---------	---------	---------	---------	---------	---------	---------	---------	---------	---------	---------	---------	---------	---------	---------	---------	---------	---------	---------	---------	---------	---------	---------	---------	---------	---------	---------	---------	---------	---------	---------	---------	---------	---------	---------	---------	---------	---------	---------	---------	---------	---------	---------	---------	---------	---------	---------	---------	---------	---------	---------	---------	---------	---------	---------	---------	---------	---------	---------	---------	---------	---------	---------	---------	---------	---------	---------	---------	---------	---------	---------	---------	---------	---------	---------	---------	---------	---------	---------	---------	---------	---------	---------	---------	---------	---------	---------	---------	---------	---------	---------	---------	---------	---------	---------	---------	---------	---------	---------	---------	---------	---------	---------	---------	---------	---------	---------	---------	---------	---------	---------	---------	---------	---------	---------	---------	---------	---------	---------	---------	---------	---------	---------	---------	---------	---------	---------	---------	---------	---------	---------	---------	---------	---------	---------	---------	---------	---------	---------	---------	---------	---------	---------	---------	---------	---------	---------	---------	---------	---------	---------	---------	---------	---------	---------	---------	---------	---------	---------	---------	---------	---------	---------	---------	---------	---------	---------	---------	---------	---------	---------	---------	---------	---------	---------	---------	---------



PRELIMINARY NOT FOR CONSTRUCTION

REV. BY DATE

DESIGNED MRY
DRAWN MRY
CHECKED ???

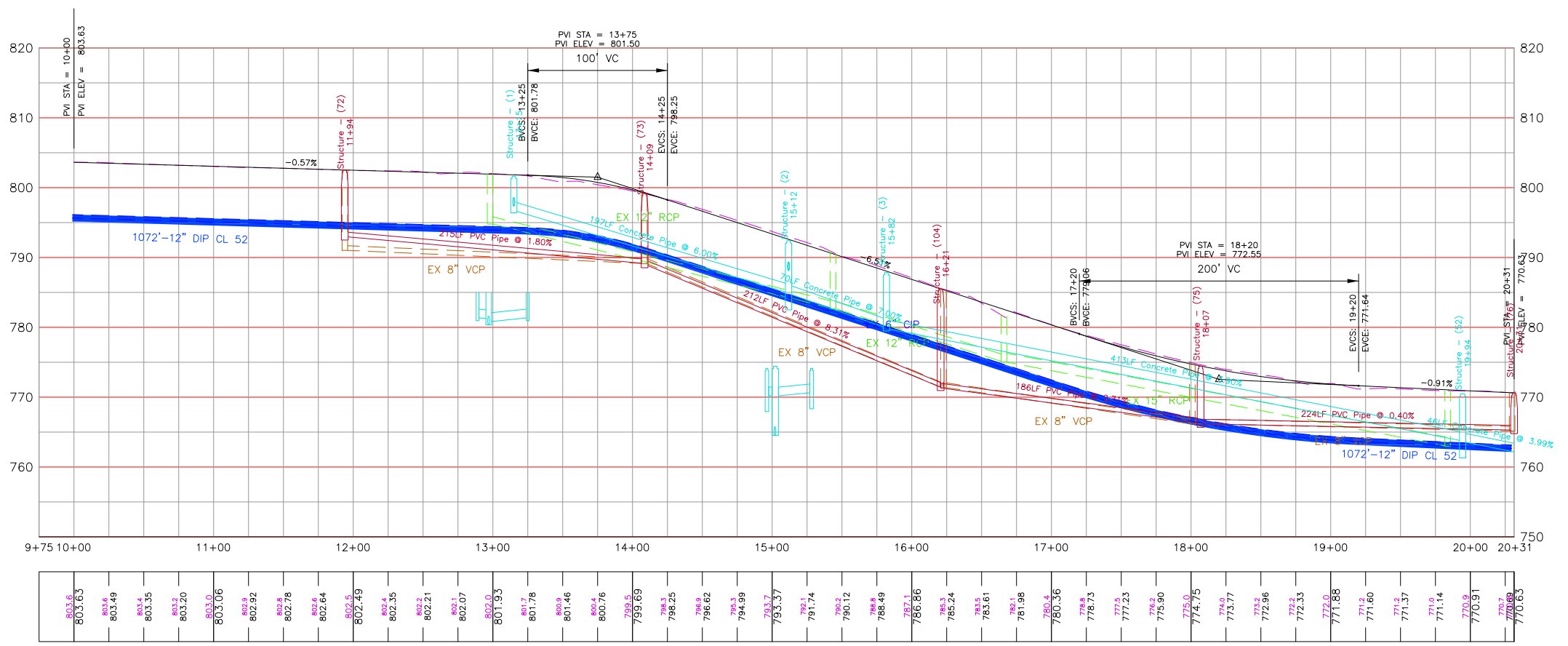
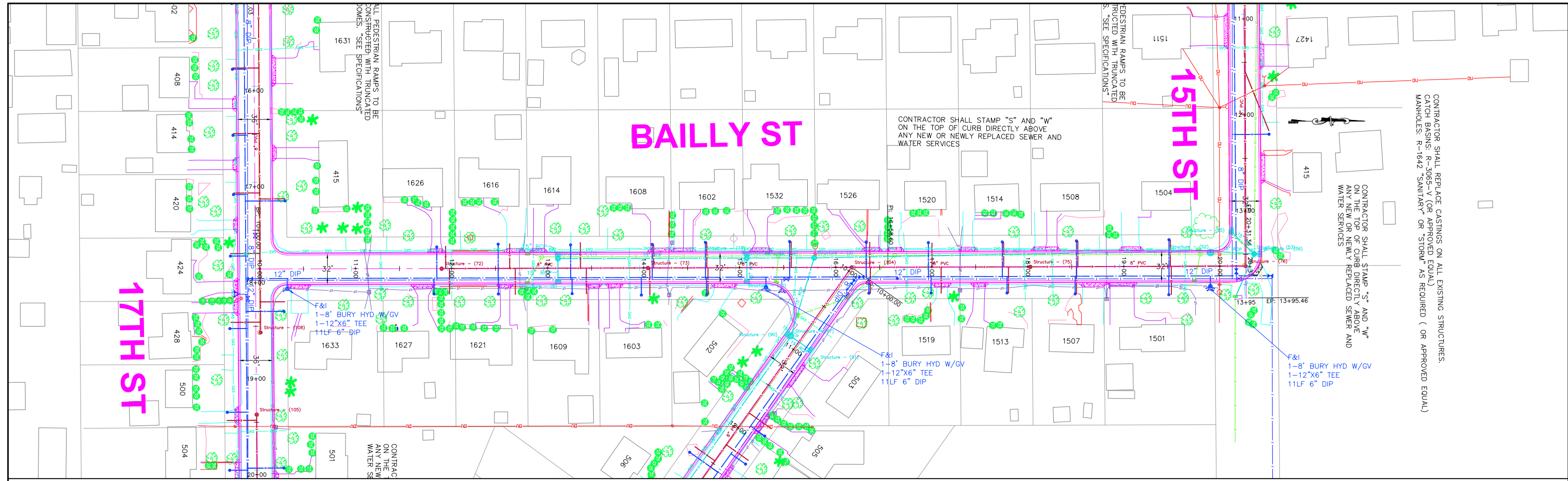
HEREBY CERTIFY THAT THIS PLAN WAS PREPARED BY ME OR UNDER MY DIRECT SUPERVISION AND THAT I AM A DULY LICENSED PROFESSIONAL ENGINEER UNDER THE LAWS OF THE STATE OF MINNESOTA.

NICHOLAS A. EGGER, P.E.
LIC. NO. 45834 DATE ??/??/????

CITY OF HASTINGS
101 4TH STREET EAST
HASTINGS, MN 55033

CITY PROJECT 2011-1
2011 INFRASTRUCTURE IMPROVEMENTS
15TH, 16TH, & FLORENCE STREET PLAN & PROFILE

SHEET 36 OF ?



PRELIMINARY NOT FOR CONSTRUCTION

REV.	BY	DATE	DESCRIPTION

I HEREBY CERTIFY THAT THIS PLAN WAS PREPARED BY ME OR UNDER MY DIRECT SUPERVISION AND THAT I AM A DULY LICENSED PROFESSIONAL ENGINEER UNDER THE LAWS OF THE STATE OF MINNESOTA.
 NICHOLAS A. EGGER, P.E.
 LIC. NO. 45834 DATE ??/??/????

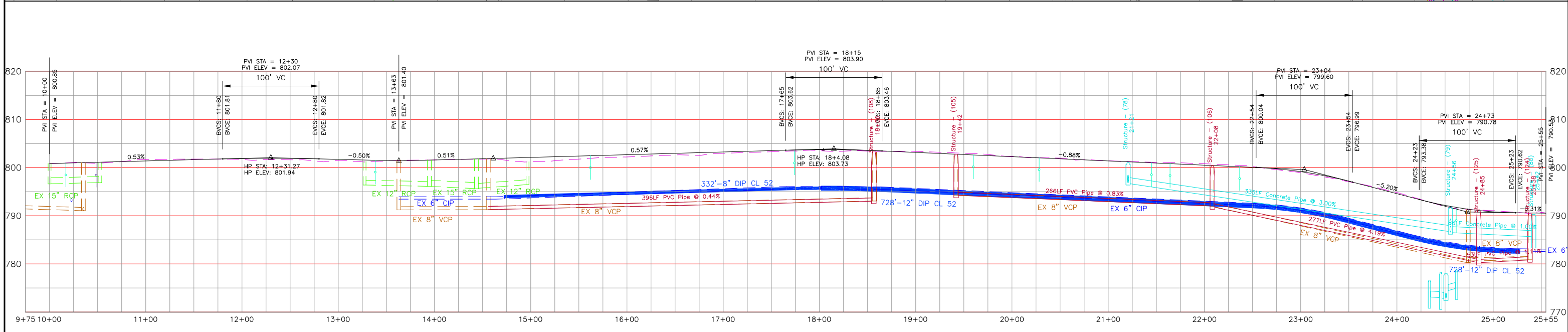
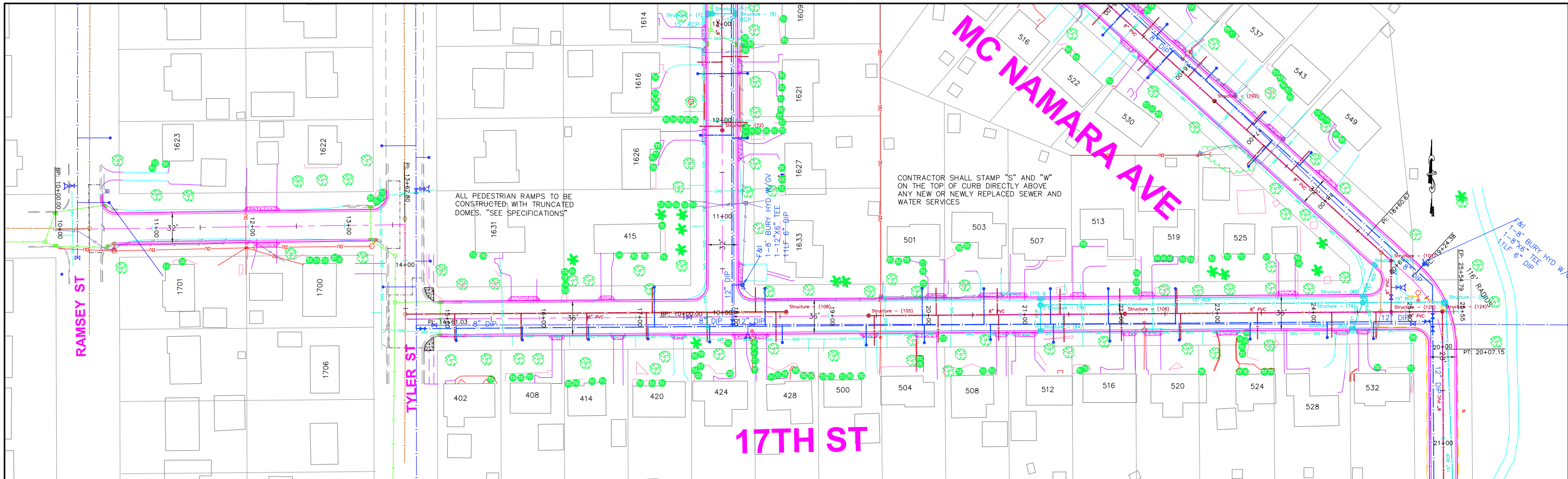
DESIGNED: MRY
 DRAWN: MRY
 CHECKED: ???



CITY OF HASTINGS
 101 4TH STREET EAST
 HASTINGS, MN 55033

CITY PROJECT 2011-1
 2011 INFRASTRUCTURE IMPROVEMENTS
 BAILLY ST PLAN & PROFILE

SHEET 38 OF ?



800.9	801.1	800.98	801.12	801.25	801.38	801.51	801.65	801.78	801.89	801.94	801.92	801.84	801.72	801.59	801.47	801.46	801.39	801.72	801.84	801.98	802.12	802.26	801.8	802.40	802.1	802.54	802.69	802.83	802.97	802.5	803.11	803.0	803.25	803.2	803.39	803.3	803.50	803.4	803.67	803.5	803.73	803.4	803.58	803.37	803.3	803.15	802.99	802.89	802.71	802.7	802.49	802.4	802.27	802.0	802.05	801.83	801.7	801.61	801.39	801.17	800.95	800.73	800.8	800.51	800.6	800.29	800.07	799.75	799.9	799.16	798.31	797.18	796.0	795.88	794.8	794.58	793.28	792.16	791.34	791.1	790.82	790.7	790.62	790.2	790.53
-------	-------	--------	--------	--------	--------	--------	--------	--------	--------	--------	--------	--------	--------	--------	--------	--------	--------	--------	--------	--------	--------	--------	-------	--------	-------	--------	--------	--------	--------	-------	--------	-------	--------	-------	--------	-------	--------	-------	--------	-------	--------	-------	--------	--------	-------	--------	--------	--------	--------	-------	--------	-------	--------	-------	--------	--------	-------	--------	--------	--------	--------	--------	-------	--------	-------	--------	--------	--------	-------	--------	--------	--------	-------	--------	-------	--------	--------	--------	--------	-------	--------	-------	--------	-------	--------

PRELIMINARY

NOT FOR CONSTRUCTION

REV.	BY	DATE

I HEREBY CERTIFY THAT THIS PLAN WAS PREPARED BY ME OR UNDER MY DIRECT SUPERVISION AND THAT I AM A DULY LICENSED PROFESSIONAL ENGINEER UNDER THE LAWS OF THE STATE OF MINNESOTA.

NICHOLAS A. EGGER, P.E.
LIC. NO. 45834 DATE ??/??/????

DESIGNED
MRY
DRAWN
MRY
CHECKED
???



CITY OF HASTINGS
101 4TH STREET EAST
HASTINGS, MN 55033

CITY PROJECT 2011-1
2011 INFRASTRUCTURE IMPROVEMENTS
17TH ST PLAN & PROFILE

SHEET 39 OF ?